



# GLS STONE GROUP USA

PARIS - XIAMEN - LOS ANGELES - MIAMI

**WHERE OLD WORLD CRAFTSMENSHIP  
MEETS MODERN TECHNOLOGY**

# ABOUT US

Since 2008, GLS Stone Group USA has brought a blend of old-world craftsmanship and modern style to our stonework production. We are artisans and craftsmen who appreciate the beauty and elegance of French Limestone and the timeless qualities it adds to any building. Our generational expertise and attention to detail give GLS the experience of making quality stone products that will beautify any residential or commercial project standing lengths above others.



At GLS Stone Group USA, our mission is to offer the highest quality French Limestones for architectural and dimensional stone elements, including slabs, tiles, and pavers. We are dedicated to delivering superior craftsmanship, ensuring that every project we undertake becomes a timeless masterpiece. Recognized globally, GLS Stone Group USA is synonymous with excellence, setting a standard that transforms architectural visions into enduring works of art.

# TABLE OF CONTENT

---

INTRODUCTION

LIMESTONE COLORS

LIMESTONE FINISHES

ARCHITECTURAL ELEMENTS

STATUES, FOUNTAINS, FIREPLACES

CONTACT

# GLS STONE GROUP



**LAURENT SEBBAN**

Laurent Sebban a French native, who 15 years ago moved to China full time where he owns operates and oversees everything that leaves our factory bringing the European standard of quality to everything that we make.

Our quality and service stands lengths above as one of the premier manufacturers of French Limestone elements in the world





# FRENCH LIMESTONE COLORS



Alps



Burgundy White



Chauvigny



Chauvigny White



Cinderella



Dior



French Wood Vein



French Beige



French Cheese



French Gold light

# FRENCH LIMESTONE COLORS



French Gold Dark



French Grey



La Louvre



Lens



Paris Stone



Portier



Provence



Provence Yellow



Provence Gold

# FRENCH LIMESTONE FINISHES

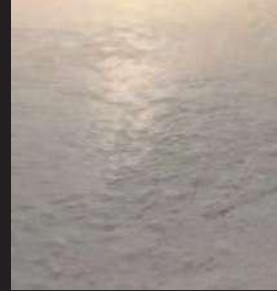






### Antiqued

A finish that replicates rustic or distressed textures made to look aged.



### Brushed

The process of etching the stone's surface using tools such as a wire brush so the stone retains its uneven surface and the natural ridges that occur when it is extracted from the earth.



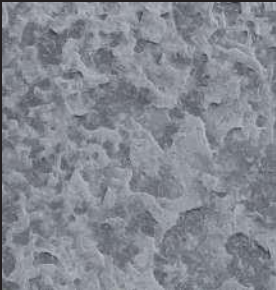
### Brush Hammered

Created using a high-impact machine or by hand using a masonry tool to uniformly pit the stone surface repeatedly impacting the material's surface for a rough, weathered texture.



### Crandle

A multi-pointed hammer tool used for dressing the face of stone with a rough surface. Crandalling can be fine and linear or large and irregular.



### Flamed

Produced when an intense flame is fired at the stone, causing the surface to burst and become rough. This finish is used primarily for exterior applications where slip-resistance is. Extremely important.



### Honed

A honed finish is even, smooth in texture, and generally matte, as opposed to a polished finish which is a shiny and glossy.



### Leathered

A soft sheen that is less than polished granite but includes a textured appearance like brushed with a dimple-like natural earthy texture.



### Lined

Rough-cut stone with lines cut in at varying depths and widths for aesthetic appearance. Depending on the depth and width, the body of the stone can be polished or honed for a more dramatic effect



### Polished

A polished finish has a highly reflective or "shiny" surface which will display the vibrancy of the stone's colors as well as the "character" of the stone

## French Limestone Finishes Cont.

---

Exceptional materials meet old-world artistry and exquisite workmanship in today's most luxurious, visually arresting modern apartments. Our hand-selected limestone creates backdrops of breathtaking beauty.



### Sandblasted

The application of a high-pressure stream of water mixed with sand. The stone surface appears rough yet clean with a uniform texture



### Saw Cut

The finish of the stone is essentially a simple saw cut, there is no additional polishing or fabrication that occurs.



### Split Face

The standard and most common finish for all veneer, Split face is a broad term for any material that has been broken or split to expose a rougher surface on the face of the stone



### Tumbled

A tumbled finish leaves the edges of the stone artfully rough and chipped, creating a weathered, aged look while the surface of the stone keeps its uneven surface and natural ridge



### Waterblast

Process of using highly pressurized water to make rough and etch the stone giving it a weathered and distressed surface.



# ARCHITECTURAL ELEMENTS

Architectural elements are the unique details and component parts that, together, form the architectural style of houses, buildings, and structures. While architectural styles vary from different time periods and cultures, the architectural elements are decorative details that bring life to the home.





## BALUSTERS & BALUSTRADES

A baluster is a vertical molded shaft found in stairways, parapets, balconies, and other architectural features typically decorative in design in a series supporting a top rail and a bottom rail called a balustrade.





# CLADDING

A covering of stone that is fixed to the outside of a building to make it look more attractive.



# COLLUMNS

Columns can be both decorative or structural and consist of 3 parts. The base is the bottom on which the rest of the elements stand. The shaft, the lengthy portion in the center, and the capital, the decorative cap on top of the shaft. Columns are made in many different shapes, sizes, and styles depending on the architectural characteristics of the home.



# CORNICE

A horizontal ornamental molding found at the joints where walls meet ceilings





An architectural block or bracket projecting from a wall, often in the eave of a roof overhang functioning to support (or appearing to support) a ceiling, beam, shelf, or the roof overhang itself

## CORBELL



# DOOR & WINDOW SURROUND

A decorative element surrounding the exterior perimeter on the surface wall around a window or door.





A horizontal element in architecture that rests on the columns and consists of architrave, frieze, and cornice.

## ENTABLATURE



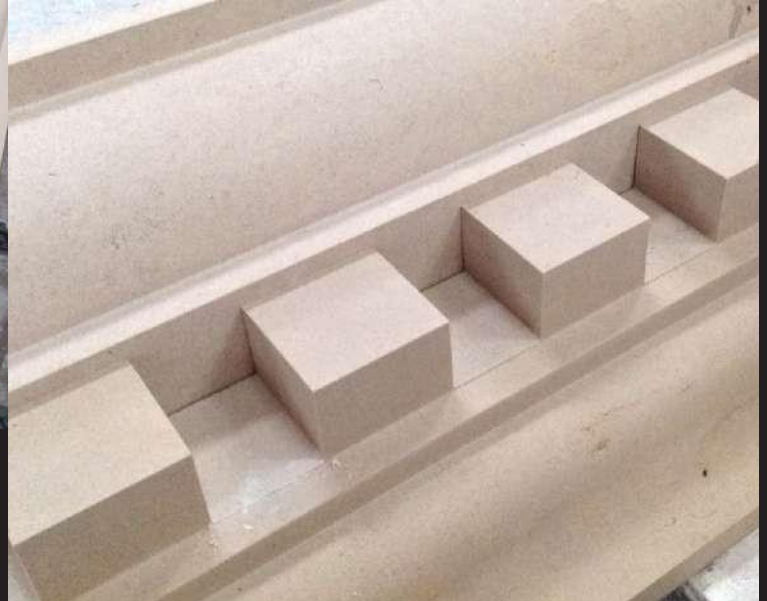
## FRIEZE

A belt course of richly sculpted ornamentation usually occurring just under a cornice or horizontally as part of an entablature.



Architectural element that contours or outlines the edges and surfaces such as a cornice, architrave, capital, arch, base, or windows and doors.

## MOLDINGS



## KEYSTONES

The wedge-shaped stone at the peak of an arch usually larger than the other stones which can be ornate and decorative.





A low barrier wall that is above the wall on the perimeter of the roofline. Sometimes also used on a terrace, balcony, and walkway.

PARAPET





# PEDIMENTS

An architectural feature that consists of a triangular ornament placed on top of a structure or feature such as a gable.



An architectural element used to give the appearance of a supporting column and to articulate an extent of wall, with only an ornamental function. Columns are freestanding, pilasters are connected to a wall.

## PILASTERS



# QUOINS

Meaning "corner" in French which is a feature, usually decorative, found on the corner of a structure's exterior which can be made from 2 pieces put together or cut from one piece, both options forming an "L".





The lowest horizontal element on a window or door

SILL



## CAPITOLS, COLUMNS & MOLDINGS





## Capitols, Columns & Moldings Continued

Exceptional materials meet old-world artistry and exquisite workmanship in today's most luxurious, visually arresting modern apartments. Our hand-selected limestone creates backdrops of breathtaking beauty.





## FOUNTAINS, FIREPLACES & STATUES

Step into a realm of extraordinary craftsmanship with our thoughtfully curated collection of limestone fountains, fireplaces, and statues. Each piece within our collection is crafted with meticulous care, capturing the essence of McSweeney's and embracing a minimalistic design ethos. Seamlessly weaving together, a unique design language, our diverse range caters to individual tastes, providing a canvas for self-expression. Immerse yourself in a world of possibilities where each piece is not just an architectural element but a statement of artistry and individuality, making every creation Pinterest-worthy in its uniqueness.

## Fountains, Fireplaces & Statues Cont.

Exceptional materials meet old-world artistry and exquisite workmanship in today's most luxurious, visually arresting modern apartments. Our hand-selected limestone creates backdrops of breathtaking beauty.









# CONTACT

Contact us through our many different  
social channels below.

Toll Free 888-283-0920  
[info@glstonegroupusa.com](mailto:info@glstonegroupusa.com)



GLS Stone Group is a group of craftsmen and  
artisans who appreciate the elegance and beauty of  
the French limestone. We have brought a blend of  
old-world craftsmanship and modern style to our  
stonework production.

